

MATERIAL AND FINISH DATA

| CODE | MATERIAL | SPEC. | FINISH | SPEC. |
|------|------------------------------|--|-----------|-----------------------------|
| A | 7075-T6 ALUMINUM | AMS 4122, QQ-A-225/9 | ANODIZE | MIL-A-8625, TYPE 1, NO SEAL |
| CR | 302, 303, 304, OR A-286 CRES | AMS 5637, 5638, 5639, 5640, 5641 AMS 5726, 5731, 5732, 5734, 5737 | PASSIVATE | AMS-QQ-P-35 |
| CRA | A-286 CRES | AMS 5726, 5731, 5732, 5734, 5737 | PASSIVATE | AMS-QQ-P-35 |
| CRM | 316 CRES | AMS 5648, 5649, 5653 | PASSIVATE | AMS-QQ-P-35 |
| T | 6AL-4V TITANIUM | AMS 4928, 4965, 4967 | NONE | |

DIMENSION DATA

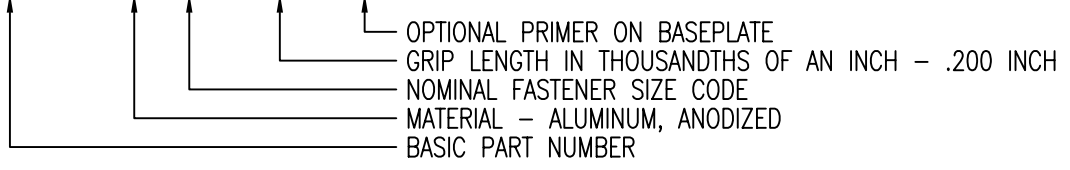
| CODE | H DIA | A DIA | B DIA |
|------|-------|-------|-------|
| 06 | .1410 | .250 | .62 |
| 08 | .1720 | .250 | .62 |
| 3 | .1940 | .312 | .75 |
| 4 | .2570 | .375 | 1.00 |

OPTIONAL PRIMER

| CODE | MATERIAL | SPEC. |
|------|--------------|---------------|
| P | EPOXY PRIMER | MIL-PRF-85582 |

EXAMPLE PART NUMBER

CB5007 A 3-200 P



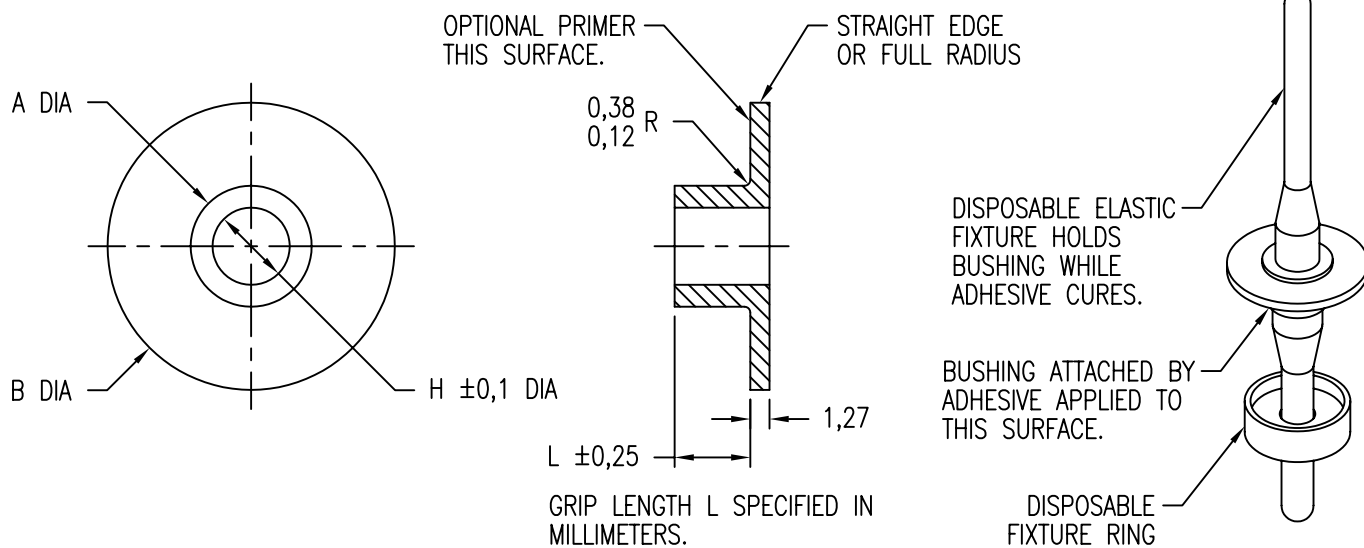
UNLESS OTHERWISE SPECIFIED, ALL DIMENSIONS ARE IN INCHES AND TOLERANCES ARE AS SHOWN BELOW. DIMENSIONAL TOLERANCES AND SYMBOLS PER ANSI Y14.5M-1982.

PROPRIETARY PARTS SHOWN IN THIS DRAWING ARE THE SUBJECT OF ISSUED UNITED STATES AND FOREIGN PATENTS AND PATENTS PENDING. UNAUTHORIZED REPRODUCTION AND/OR DISTRIBUTION OF THIS DRAWING IS SPECIFICALLY PROHIBITED.



CARSON CITY
NEVADA 89706

| | | | | | | | | |
|--------------|-------|-----------|---------|---------|---------------------------------|-----------|----------|--------------|
| CAD CB5007-1 | | APPROVALS | | DATE | TITLE | | | |
| ANGLES | ±1° | DRAWN | BPEREZ | 3SEP04 | BUSHING, PLAIN, ADHESIVE BONDED | | | |
| .XX | ±.03 | CHECKED | DOC/NTM | 3SEP04 | SIZE | CAGE CODE | DWG. NO. | REV. |
| .XXX | ±.010 | RELEASED | CGH | 12SEP04 | A | 66530 | CB5007 | 5 |
| .XXXX | ±.001 | REVISED | BPEREZ | 3SEP04 | SCALE | 2/1 | 3SEP04 | SHEET 1 OF 2 |



MATERIAL AND FINISH DATA

| CODE | MATERIAL | SPEC. | FINISH | SPEC. |
|------|------------------------------|--|-----------|-----------------------------|
| A | 7075-T6 ALUMINUM | AMS 4122, QQ-A-225/9 | ANODIZE | MIL-A-8625, TYPE 1, NO SEAL |
| CR | 302, 303, 304, OR A-286 CRES | AMS 5637, 5638, 5639, 5640, 5641 AMS 5726, 5731, 5732, 5734, 5737 | PASSIVATE | AMS-QQ-P-35 |
| CRA | A-286 CRES | AMS 5726, 5731, 5732, 5734, 5737 | PASSIVATE | AMS-QQ-P-35 |
| CRM | 316 CRES | AMS 5648, 5649, 5653 | PASSIVATE | AMS-QQ-P-35 |
| T | 6AL-4V TITANIUM | AMS 4928, 4965, 4967 | NONE | |

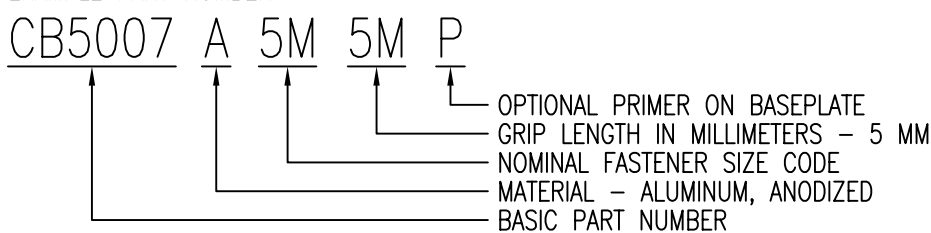
DIMENSION DATA

| CODE | H DIA | A DIA | B DIA |
|------|-------|-------|-------|
| 3M | 3,1 | 6,5 | 16,0 |
| 4M | 4,1 | 6,5 | 16,0 |
| 5M | 5,1 | 8,0 | 19,0 |
| 6M | 6,1 | 9,5 | 25,0 |
| 10M | 10,1 | 16,0 | 38,0 |

OPTIONAL PRIMER

| CODE | MATERIAL | SPEC. |
|------|--------------|---------------|
| P | EPOXY PRIMER | MIL-PRF-85582 |

EXAMPLE PART NUMBER



UNLESS OTHERWISE SPECIFIED, ALL DIMENSIONS ARE IN MILLIMETERS AND TOLERANCES ARE AS SHOWN BELOW. DIMENSIONAL TOLERANCES AND SYMBOLS PER ANSI Y14.5M-1982.

PROPRIETARY PARTS SHOWN IN THIS DRAWING ARE THE SUBJECT OF ISSUED UNITED STATES AND FOREIGN PATENTS AND PATENTS PENDING. UNAUTHORIZED REPRODUCTION AND/OR DISTRIBUTION OF THIS DRAWING IS SPECIFICALLY PROHIBITED.

GLICK BOND CARSON CITY NEVADA 89706

| | | | | | | |
|-----------------------------------|----------|-----------|--------|---------------------------------|-----------------|--------------|
| CAD CB5007-2 METRIC DIMENSIONS | | APPROVALS | DATE | TITLE | | |
| ANGLES $\pm 1^\circ$ | | DRAWN | 3SEP04 | BUSHING, PLAIN, ADHESIVE BONDED | | |
| .X $\pm 0,8$ | CHECKED | 12SEP04 | SIZE | CAGE CODE | DWG. NO. | REV. |
| .XX $\pm 0,25$ | RELEASED | 12SEP04 | A | 66530 | CB5007 (METRIC) | 5 |
| | REVISED | 3SEP04 | SCALE | 2/1 | 3SEP04 | SHEET 2 OF 2 |