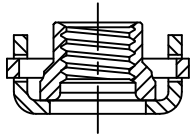


NUTPLATE ATTACHED BY ADHESIVE APPLIED TO THIS SURFACE.

DISPOSABLE ELASTIC FIXTURE HOLDS NUTPLATE WHILE ADHESIVE CURES.



NUTPLATE MEETS THE STRENGTH REQUIREMENTS OF NASM25027.

THREAD AND DIMENSION DATA (ALL DIMENSIONS BEFORE PAINT)

PART NUMBER	THREAD SIZE	A MAX	B MAX	D MIN	E MAX	H MAX	R MIN	WEIGHT * LB/100
CB6007CR08( )1	.1640-32 UNJC-3B	.652	.454	.224	.187	.250	.070	.54
CB6007CR3( )1						.250	.070	.57
CB6007CR3( )2						.312	.125	.62
CB6007CR3( )3						.375	.188	.67
CB6007CR3( )4						.437	.250	.74
CB6007CR3( )5						.500	.313	.78
CB6007CR3( )6						.562	.375	.83
CB6007CR4( )1	.2500-28 UNJF-3B	.810	.554	.312	.218	.295	.070	1.02
CB6007CR4( )2						.357	.125	1.07
CB6007CR4( )3						.419	.188	1.11
CB6007CR4( )4						.481	.250	1.20
CB6007CR4( )5						.543	.313	1.29
CB6007CR4( )6						.605	.375	1.39
CB6007CR5( )1	.3125-24 UNJF-3B	.912	.650	.375	.276	.344	.070	1.45
CB6007CR5( )2						.400	.125	1.51
CB6007CR5( )3						.461	.188	1.62
CB6007CR5( )4						.524	.250	1.74
CB6007CR5( )5						.586	.313	1.85
CB6007CR5( )6						.649	.375	1.96
CB6007CR6( )1	.3750-24 UNJF-3B	1.045	.750	.437	.317	.375	.070	2.40
CB6007CR6( )2						.430	.125	2.52
CB6007CR7( )1	.4375-20 UNJF-3B	1.192	.840	.500	.390	.500	.070	3.78
CB6007CR8( )1	.5000-20 UNJF-3B	1.290	.900	.562	.425	.580	.070	4.35

\* APPROXIMATE WEIGHT WITHOUT INSTALLATION FIXTURE.

UNLESS OTHERWISE SPECIFIED, ALL DIMENSIONS ARE IN INCHES AND TOLERANCES ARE AS SHOWN BELOW. DIMENSIONAL TOLERANCES AND SYMBOLS PER ANSI Y14.5M-1982.

PROPRIETARY PARTS SHOWN IN THIS DRAWING ARE THE SUBJECT OF ISSUED UNITED STATES AND FOREIGN PATENTS AND PATENTS PENDING. UNAUTHORIZED REPRODUCTION AND/OR DISTRIBUTION OF THIS DRAWING IS SPECIFICALLY PROHIBITED.

**CLICK BOND**

CARSON CITY  
NEVADA 89706

CAD CB6007-1

APPROVALS

DATE

TITLE

ANGLES ±1°

DRAWN *DAC*

17FEB06

NUTPLATE, CORNER, ADHESIVE BONDED

.XX ±.03

CHECKED *DAC/mtm*

22OCT15

SIZE

CAGE CODE

DWG. NO.

REV.

.XXX ±.010

RELEASED *ABC/mtm*

22OCT15

A

66530

CB6007

2

.XXXX ±.001

REVISED *DAC*

22OCT15

SCALE

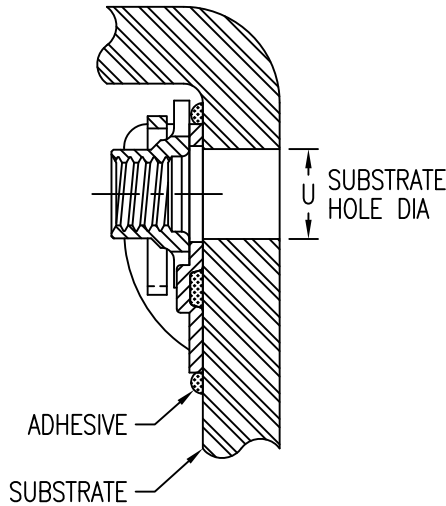
2/1

22OCT15

SHEET 1 OF 2

INSTALLATION HOLE SIZE DATA

THREAD CODE	U MIN	U MAX
08	.164	.224
3	.190	.250
4	.250	.312
5	.312	.375
6	.375	.437
7	.437	.500
8	.500	.562



BASEPLATE MATERIAL AND FINISH DATA

CODE	MATERIAL	SPEC.	PASSIVATE
CR	A-286 CRES	AMS 5525	AMS 2700

NUT MATERIAL AND FINISH DATA (SEE CB6001)

CODE	MATERIAL	FINISH	LUBRICATION
-	A-286 CRES	PASSIVATE	DRI-FILM LUBE
CRC	A-286 CRES	CAD PLATE	DRI-FILM LUBE
CRS	A-286 CRES	SILVER PLATE	NONE

RETAINING CLIP MATERIAL AND FINISH (SEE CB8002)

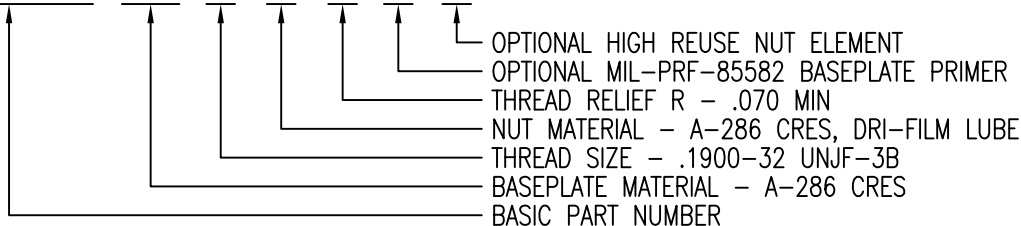
MATERIAL	SPEC.	PASSIVATE
XM-28 (UNS S24100) STAINLESS STEEL SPRING WIRE	ASTM A313/A313M	AMS 2700

PART NUMBER SUFFIXES

SUFFIX	DESCRIPTION
NL	NON-LOCKING NUT ELEMENT
R	THREAD LOCK MEETS NASM25027 REUSE REQUIREMENTS FOR 50 REUSE CYCLES

EXAMPLE PART NUMBER

CB6007 CR 3 - 1 P R



UNLESS OTHERWISE SPECIFIED, ALL DIMENSIONS ARE IN INCHES AND TOLERANCES ARE AS SHOWN BELOW. DIMENSIONAL TOLERANCES AND SYMBOLS PER ANSI Y14.5M-1982.

PROPRIETARY PARTS SHOWN IN THIS DRAWING ARE THE SUBJECT OF ISSUED UNITED STATES AND FOREIGN PATENTS AND PATENTS PENDING. UNAUTHORIZED REPRODUCTION AND/OR DISTRIBUTION OF THIS DRAWING IS SPECIFICALLY PROHIBITED.

**CLICK BOND**

CARSON CITY  
NEVADA 89706

CAD CB6007-2

APPROVALS

DATE

TITLE

ANGLES ±1°

DRAWN *DAC*

17FEB06

NUTPLATE, CORNER, ADHESIVE BONDED

.XX ±.03

CHECKED *DAC/mtm*

22OCT15

SIZE

CAGE CODE

DWG. NO.

REV.

.XXX ±.010

RELEASED *DAC/mtm*

22OCT15

A

66530

CB6007

2

.XXXX ±.001

REVISED *DAC*

22OCT15

SCALE

2/1

22OCT15

SHEET 2 OF 2