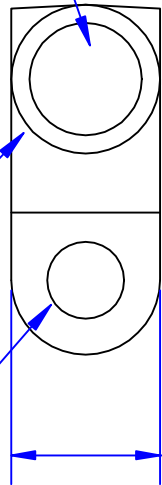


Quick Cable Reserves The Right to Alter Product Types, Their Technical Data, Dimensions, Style And Accessories Without Prior Notification.

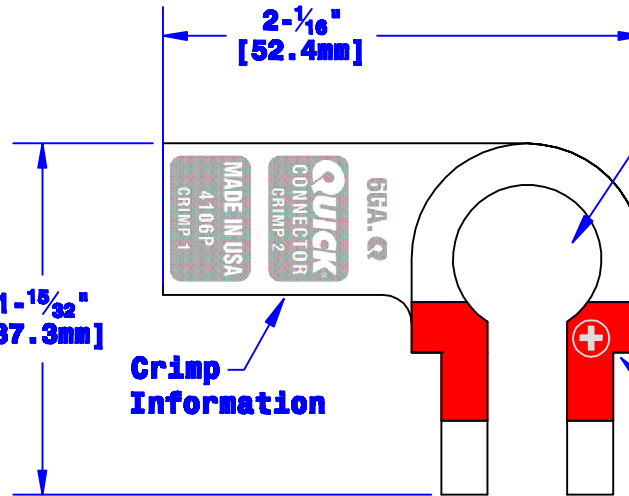
**I.D. Sized For 6 Ga. [13mm²] Stranded Cable
7/8" [22.2mm] Min Depth**

35/64" O.D. [14mm] (May Vary Due To Shrinkage)

Bolt Hole Sized For 5/16" [M8] Bolt



21/32" [16.7mm]



Crimp Information

Sized For Pos. Post Per SAE J537

Polarity Stamp

Property of QUICKCABLE 3700 Quick Drive Franksville, WI 53126 U.S.A. www.quickcable.com	TITLE Right Elbow, Pos. 6 Ga. [13mm²]
	PART # 4106P

Confidential and Proprietary Information

Material & Treatment High Conductivity Copper Alloy Tin Plated	Drawing # 4106P-INFO	REV Sheet 1 of 1
--	---------------------------------------	----------------------------

					Drawn By Jim H	Date 07-13-12	Checked By Mike E	Scale None
					Tolerances, unless otherwise noted Dimensions are reference only			
Rev	Date	ECH#	By	Description				