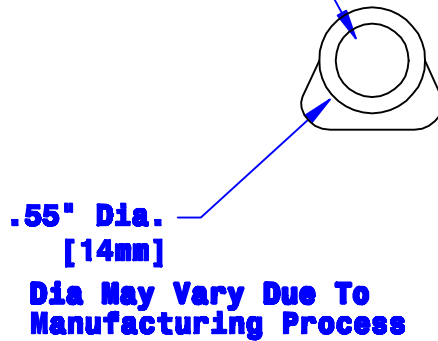
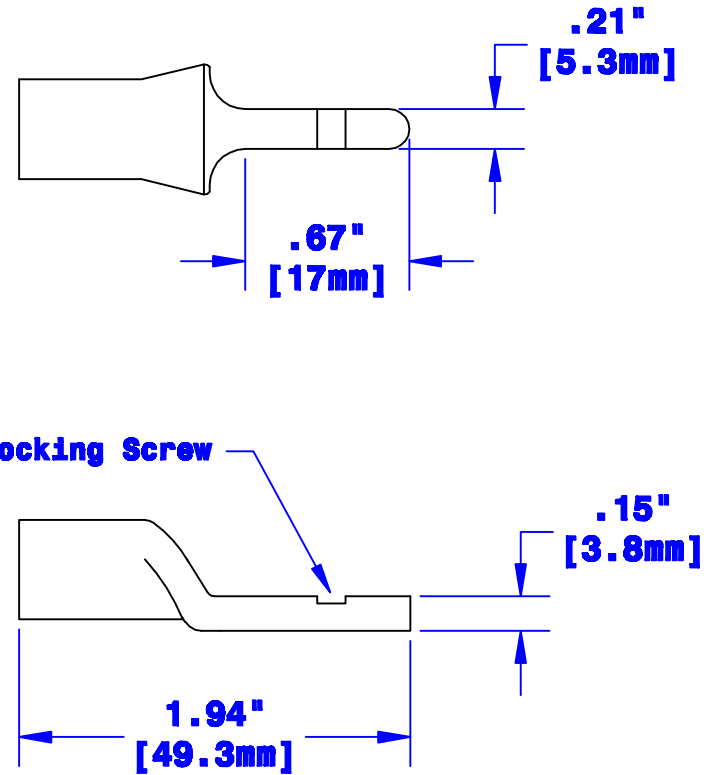


**ID Sized For 1 or 2 Ga.  
[40-32mm<sup>2</sup>] Stranded Cable  
3/4" [19.1mm] Min Depth**



**Slotted For Locking Screw**



<b>Property of</b> <b>QUICKCABLE®</b> 3700 Quick Drive Franksville, WI 53126 U.S.A. www.quickcable.com		<b>TITLE</b> <b>1&amp;2 ga [40-32mm<sup>2</sup>]</b> <b>Magna Lug,</b> <b>Inverter</b>	
<b>CONFIDENTIAL AND PROPRIETARY INFORMATION</b>		<b>PART #</b> <b>102802</b>	
<b>Material &amp; Treatment</b> <b>100% Copper</b> <b>Tin Plated</b>		<b>Drawing #</b> <b>102802-Info</b>	
<b>Dimensions are reference only</b>		<b>Sheet 1 of 1</b>	

Rev	Date	ECN#	By	Description	Drawn By	Date	Checked By	Scale
					Jim H	02-03-09	Mike E	None
					Tolerances, unless otherwise noted <b>Dimensions are reference only</b>			