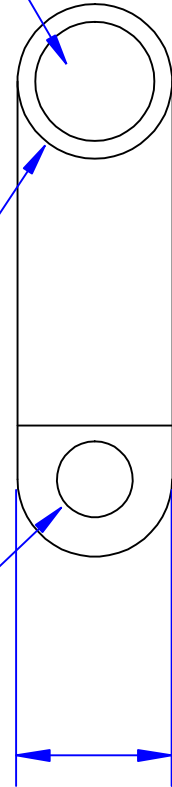


I.D. sized for  
1/0 ga [50mm<sup>2</sup>]  
stranded cable

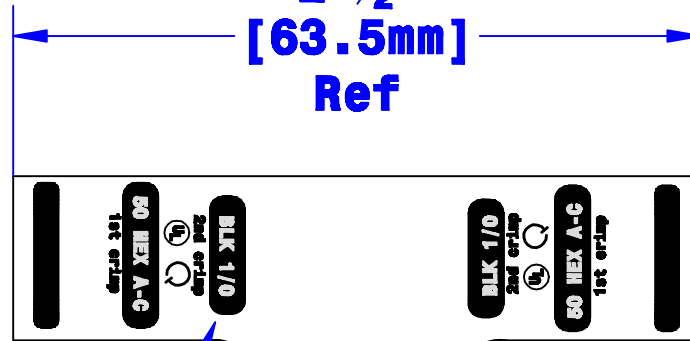
21/32" O.D.  
[16.7mm]  
(May vary due  
to shrinkage)

Hole sized for  
5/16" [M8] bolt



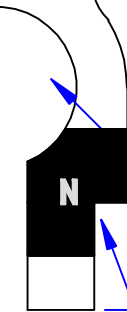
41/64"  
[16.3mm]  
Ref

2-1/2"  
[63.5mm]  
Ref



Crimp  
Information

Cable size  
stamp



Sized for  
Neg. post

Polarity  
stamp

2-13/64"  
[55.9mm]  
Ref

**B**

Property of <b>QUICK CABLE</b> 3700 Quick Drive Frankenville, WI 53126 U.S.A. www.quickcable.com	TITLE <b>Die cast flag 1/0 Ga. [50mm<sup>2</sup>]</b>
	PART # <b>4310N</b>
<b>Confidential and Proprietary Information</b>	
Material & Treatment <b>High Conductivity Copper Alloy Matte Tin Plate</b>	Drawing # <b>4310N-Info</b>
Tolerances, unless otherwise noted Dimensions are reference only	
Sheet 1 of 1	

Rev	Date	ECN#	By	Description
<b>B</b>	5-21-10	2126	BS	update drawing
<b>A</b>	6-01-06	1285	JMH	Added color printing to tangs

Drawn By <b>Jim H</b>	Date <b>12/22/03</b>	Checked By <b>Mike E</b>	Scale <b>None</b>
--------------------------	-------------------------	-----------------------------	----------------------

REV <b>B</b>
-----------------