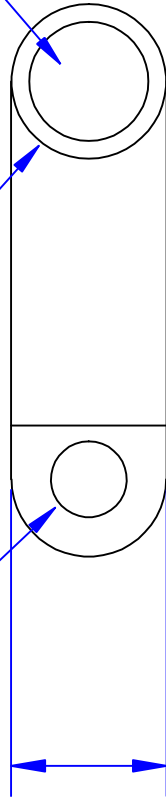


**I.D. sized for
1 ga [40mm²]
stranded cable**

**17/32" O.D.
[13.5mm]
(May vary due
to shrinkage)**

**Hole sized for
5/16" [M8] bolt**



**17/32"
[13.5mm]
Ref**

**2-1/2"
[63.5mm]
Ref**



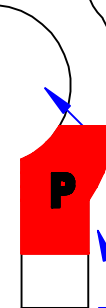
**Crimp
Information**

**2-5/64"
[52.8mm]
Ref**

**Cable size
stamp**



**Sized for
Pos. post**



**Polarity
stamp**

Property of QUICK CABLE 3700 Quick Drive Frankeville, WI 53126 U.S.A. www.quickcable.com	TITLE Die cast flag 1 Ga. [40mm ²]
	PART # 4301P
Confidential and Proprietary Information	
Material & Treatment High Conductivity Copper Alloy Matte Tin Plate	Drawing # 4301P-Info REV A
Dimensions are reference only	
Sheet 1 of 1	

Rev	Date	ECN#	By	Description
A	5-30-06	1295	JMH	Added color printing to tangs

Drawn By Jim H	Date 12/22/03	Checked By Mike E	Scale None
--------------------------	-------------------------	-----------------------------	----------------------