

Sized for Pos. Post

2-<sup>1</sup>/<sub>16</sub>"  
[52.4mm]  
Ref

1-<sup>15</sup>/<sub>32</sub>"  
[37.3mm]  
Ref

1/0

P

BLK 1/0  
2nd crimp  
50 HEX A-C  
1st crimp

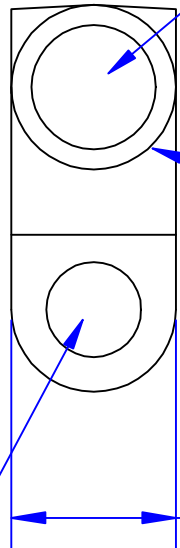
Crimp  
information

Polarity  
stamp

Cable size  
stamp

Bolt hole sized  
for 5/16" [M8] bolt

I.D. sized for  
1/0 Ga [50mm<sup>2</sup>] stranded  
cable, 7/8" [22.2mm]  
min depth



4<sup>1</sup>/<sub>64</sub>"  
[16.3mm] OD.  
(Dia may  
vary due to  
shrinkage)

4<sup>1</sup>/<sub>64</sub>"  
[16.3mm]  
Ref

Property of <b>QUICK CABLE</b> 3700 Quick Drive Franksville, WI 53126 U.S.A. www.quickcable.com	TITLE <b>DieCast 1/0 Ga.          [50mm<sup>2</sup>]          Left Elbow</b>
	PART # <b>4210P</b>

**Confidential and Proprietary Information**

Rev	Date	ECN#	By	Description
	6-21-06	1285	JMH	New drawing

Drawn By	Date	Checked By	Scale
Jim H	6-21-06	Mike E	None
Tolerances, unless otherwise noted			
Dimensions for reference only			

Material & Treatment High Conductivity Copper Alloy Matte Tin Plated	Drawing # <b>4210P-INFO</b>	REV
	Sheet 1 of 1	