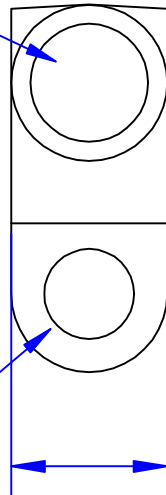


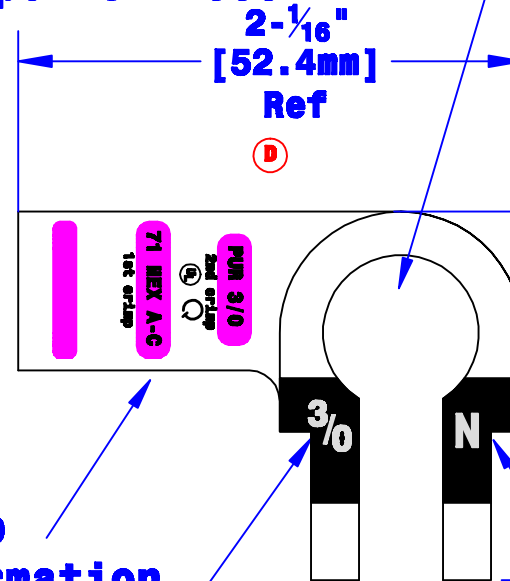
**I.D. sized for  
3/0 Ga [81mm<sup>2</sup>] stranded  
cable, 7/8" [22.2mm]  
min depth**



**4 1/64" [16.3mm]  
Ref**

**Bolt hole sized  
for 5/16" [M8] bolt**

**Sized for Neg. Post  
per SAE J537**



**2-1/16" [52.4mm]  
Ref**

**1-15/32" [37.3mm]  
Ref**

**Crimp  
information**

**Cable size  
stamp**

**Polarity  
stamp**

<b>Property of QUICK CABLE</b> 3700 Quick Drive Frankeville, WI 53126 U.S.A. www.quickcable.com	<b>TITLE</b> DieCast 3/0Ga. [81mm <sup>2</sup> ] Right Elbow	
	<b>PART #</b> 4130N	
<b>Confidential and Proprietary Information</b>		
<b>Material &amp; Treatment</b> High Conductivity Copper Alloy Matte Tin Plated	<b>Drawing #</b> 4130N-Info	<b>REV</b> <b>D</b>
	<b>Sheet 1 of 1</b>	

Rev	Date	ECN#	By	Description
<b>D</b>	<b>4-17-08</b>	<b>1743</b>	<b>KDA</b>	<b>Was Max</b>
<b>C</b>	<b>6-12-06</b>	<b>1290</b>	<b>JNH</b>	<b>Added printing to tangs; corrected dims.</b>
<b>B</b>	<b>3-05-04</b>	<b>698</b>	<b>JNH</b>	<b>Added Pltg &amp; Tol. spec. &amp; length change</b>
<b>A</b>	<b>11-21-03</b>	<b>654</b>	<b>JNH</b>	<b>corrected print dim to read 2-7/64" max</b>

<b>Drawn By</b>	<b>Date</b>	<b>Checked By</b>	<b>Scale</b>
<b>Paul</b>	<b>3/26/03</b>	<b>Roger</b>	<b>None</b>
<b>Tolerances, unless otherwise noted          Dimensions for reference only</b>			