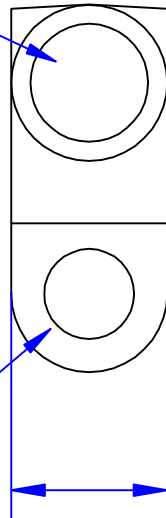


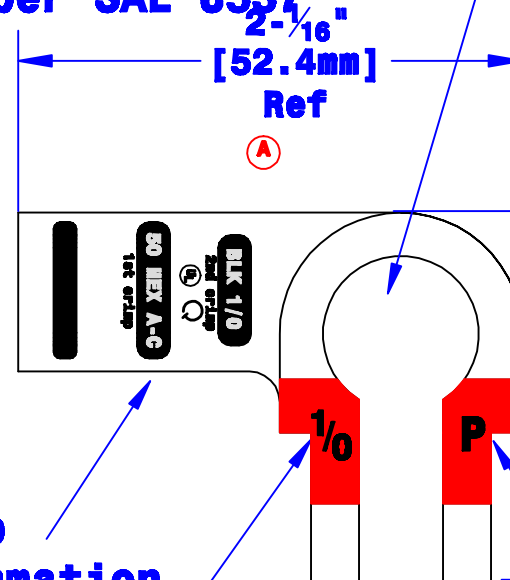
I.D. sized for  
1/0 Ga [50mm<sup>2</sup>] stranded  
cable, 7/8" [22.2mm]  
min depth



4 1/64"  
[16.3mm]  
Ref

Bolt hole sized  
for 5/16" [M8] bolt

Sized for Pos. Post  
per SAE J537



2 - 1/16"  
[52.4mm]  
Ref

1 - 15/32"  
[37.3mm]  
Ref

Crimp  
information

Cable size  
stamp

Polarity  
stamp

Property of <b>QUICK CABLE</b> 3700 Quick Drive Frankeville, WI 53126 U.S.A. www.quickcable.com	TITLE <b>DieCast 1/0 Ga.</b> [50mm <sup>2</sup> ] <b>Right Elbow</b>
	PART # <b>4110P</b>
<b>Confidential and Proprietary Information</b>	
Material & Treatment High Conductivity Copper Alloy Matte Tin Plated	Drawing # <b>4110P-Info</b> Sheet 1 of 1
Drawn By <b>Jim H</b>	Date <b>6-19-06</b>
Checked By <b>Mike E</b>	Scale <b>None</b>
Tolerances, unless otherwise noted Dimensions for reference only	
REV <b>A</b>	

Rev	Date	ECN#	By	Description
<b>A</b>	<b>4-17-06</b>	<b>1743</b>	<b>KDA</b>	<b>Was Max</b>