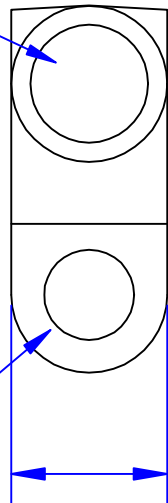


I.D. sized for  
2 Ga [32mm<sup>2</sup>] stranded  
cable, 7/8" [22.2mm] min  
depth



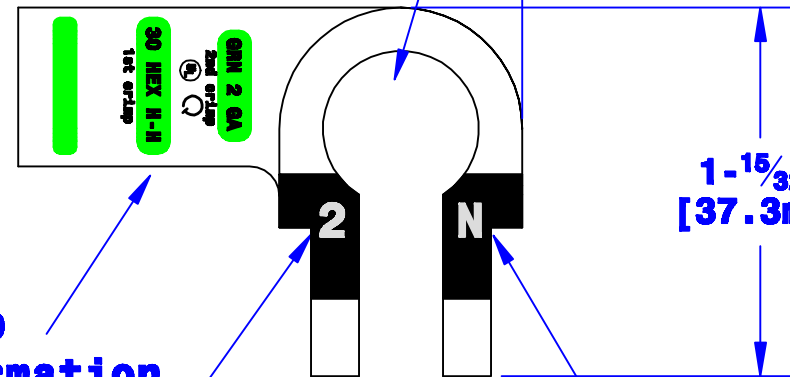
2 1/32"  
[16.7mm]  
Ref

Bolt hole sized  
for 5/16" [M8] bolt

Sized for Neg. Post  
per SAE J537



2 - 1/16"  
[52.4mm]  
Ref  
C



1 - 15/32"  
[37.3mm]

Crimp  
information

Cable size  
stamp

Polarity  
stamp

Property of <b>QUICK CABLE</b> 3700 Quick Drive Frankeville, WI 53126 U.S.A. www.quickcable.com	TITLE <b>DieCast 2 Ga. [32mm<sup>2</sup>]          Right Elbow</b>	
	PART # <b>4102N</b>	
<b>Confidential and Proprietary Information</b>		
Material & Treatment High Conductivity Copper Alloy Matte Tin Plated	Drawing # <b>4102N-Info</b>	REV <b>C</b>
	Sheet 1 of 1	

Rev	Date	ECN#	By	Description
C	4-17-06	1743	KDA	Was Max
B	6-12-06	1290	JMH	Added printing to tangs
A	3-5-04	698	Jim H	Added Pltg. & Tol. spec. & length change

Drawn By	Date	Checked By	Scale
Paul	4/15/03	Roger	None
Tolerances, unless otherwise noted Dimensions for reference only			