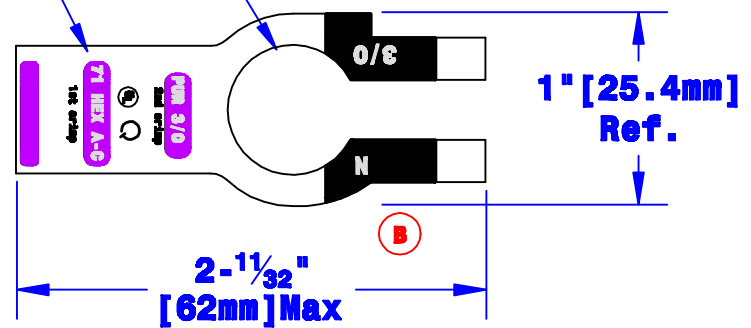
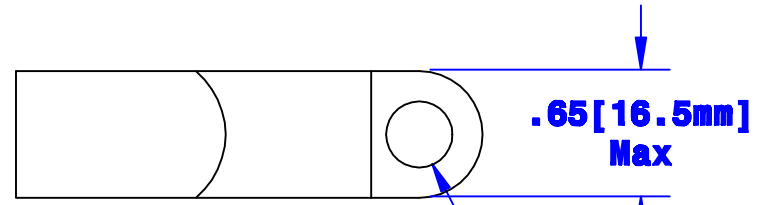
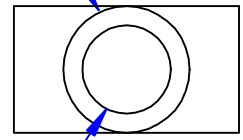


**Negative Post Hole**  
**Crimp Information**



**.65"**  
**[16.5mm]**  
**Dia. Ref**



**Bolt Hole Sized**  
**For 5/16" [M8] Bolt**

**I.D. Sized For 3/0**  
**[81mm<sup>2</sup>] Stranded Cable**  
**7/8" [22.2mm] Min Depth**

<b>Property of</b> <b>QUICKCABLE®</b> 3700 Quick Drive Franksville, WI 53126 U.S.A. www.quickcable.com	TITLE
	<b>Straight clamp</b>
	PART #
	<b>4030N</b>

**Confidential and Proprietary Information**

Rev	Date	ECN#	By	Description
<b>B</b>	02-11-09	1759	JMH	Update print; remove one notch; shorten tange
<b>A</b>	5-25-06	1205	JMH	Added color printing to tange

Drawn By	Date	Checked By	Scale
<b>Paul</b>	<b>3-31-03</b>	<b>Mike E</b>	<b>None</b>

Tolerances, unless otherwise noted  
 Dimensions are reference only

<b>Material &amp; Treatment</b> <b>High Conductivity</b> <b>Copper Alloy</b> <b>Matte Tin Plate</b>	Drawing #	REV
	<b>4030N-Info</b>	<b>B</b>
Sheet 1 of 1		