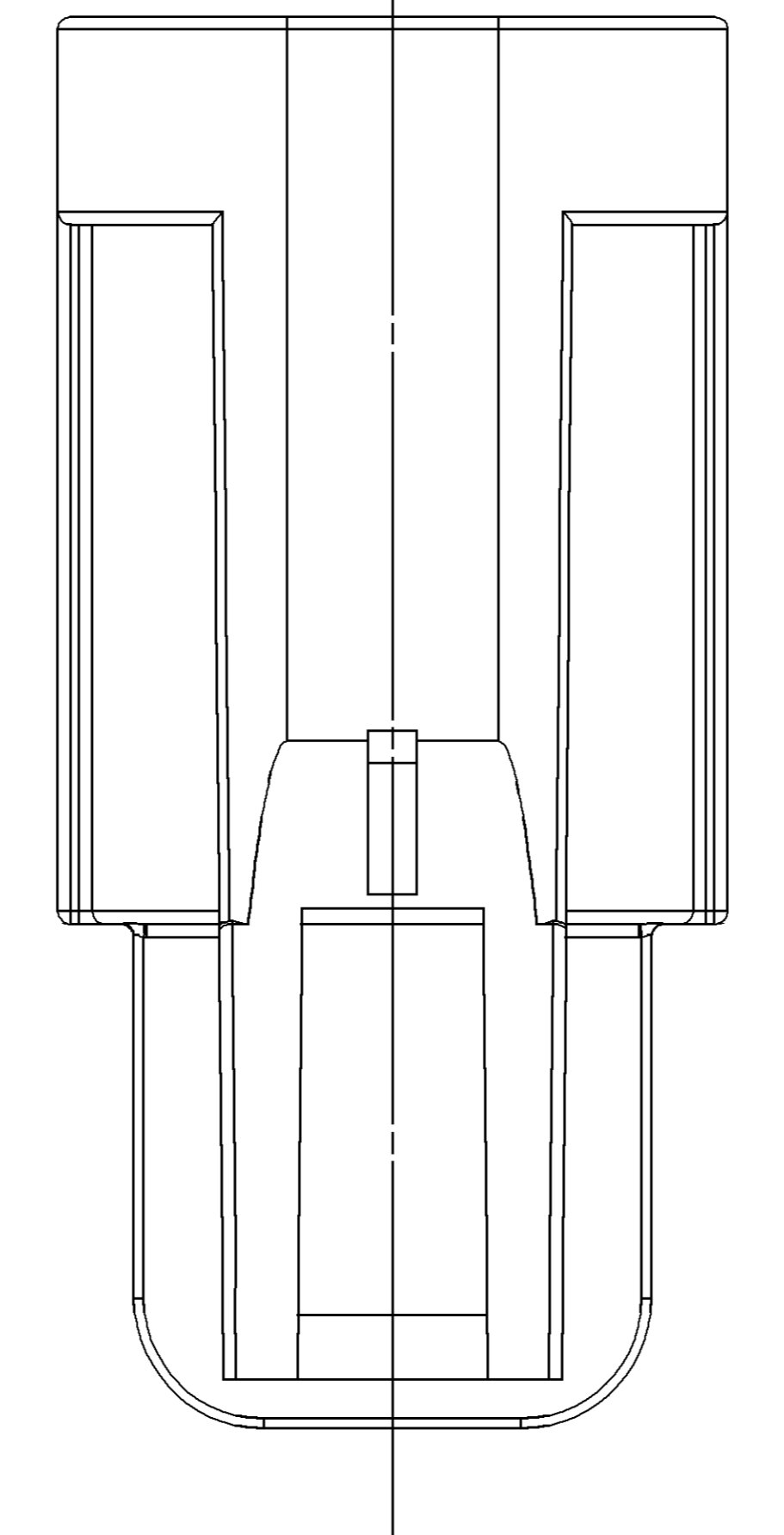
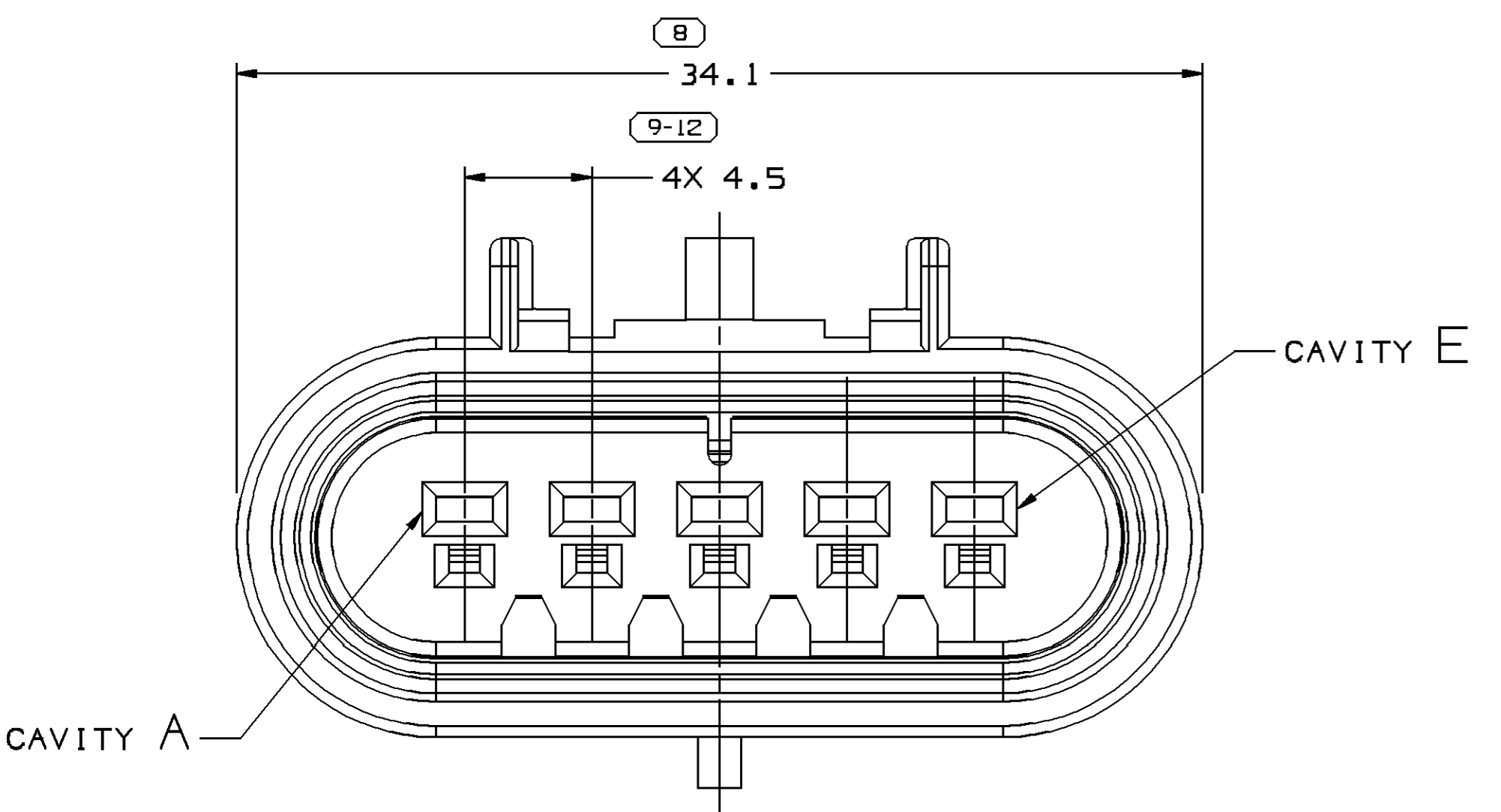
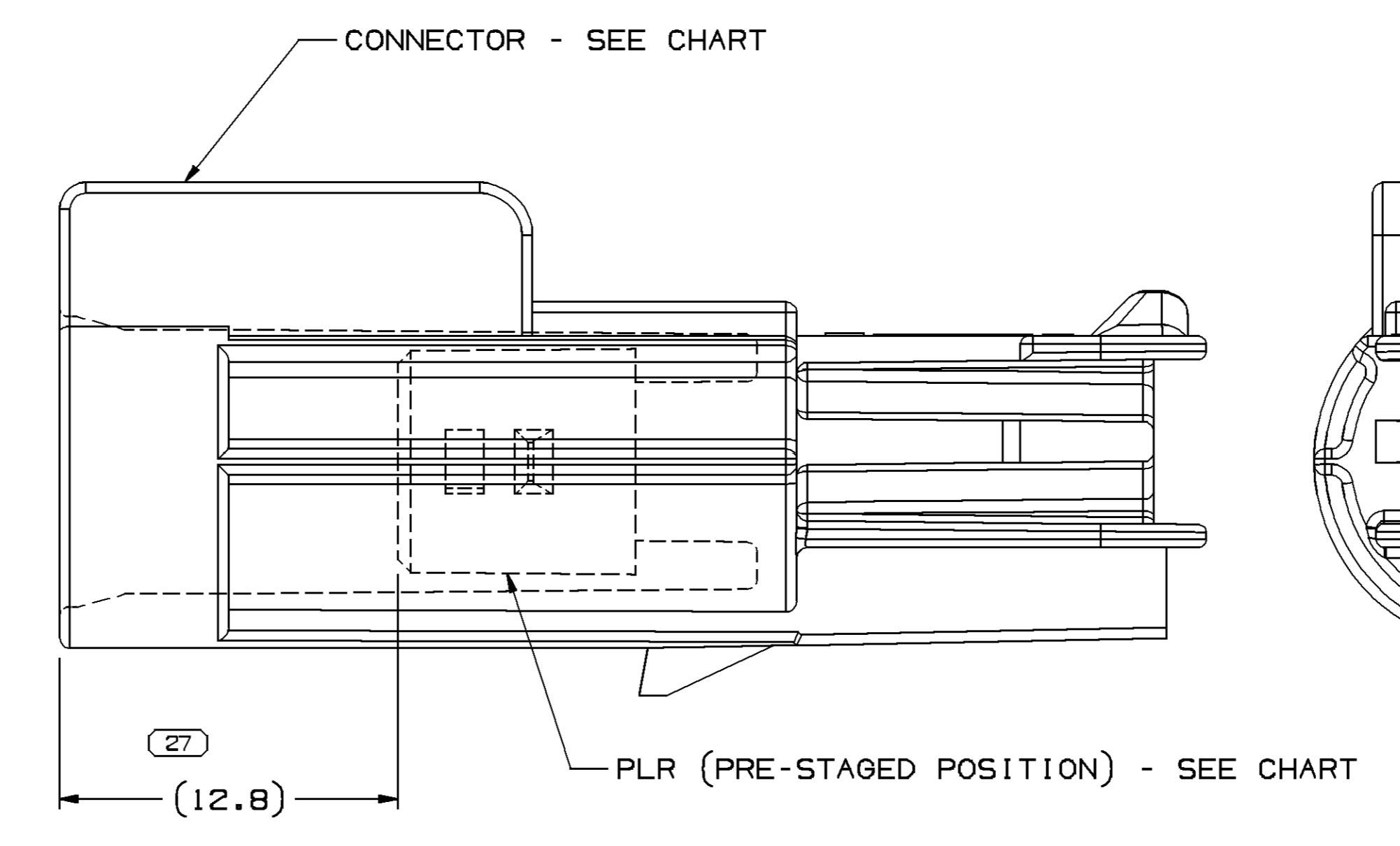
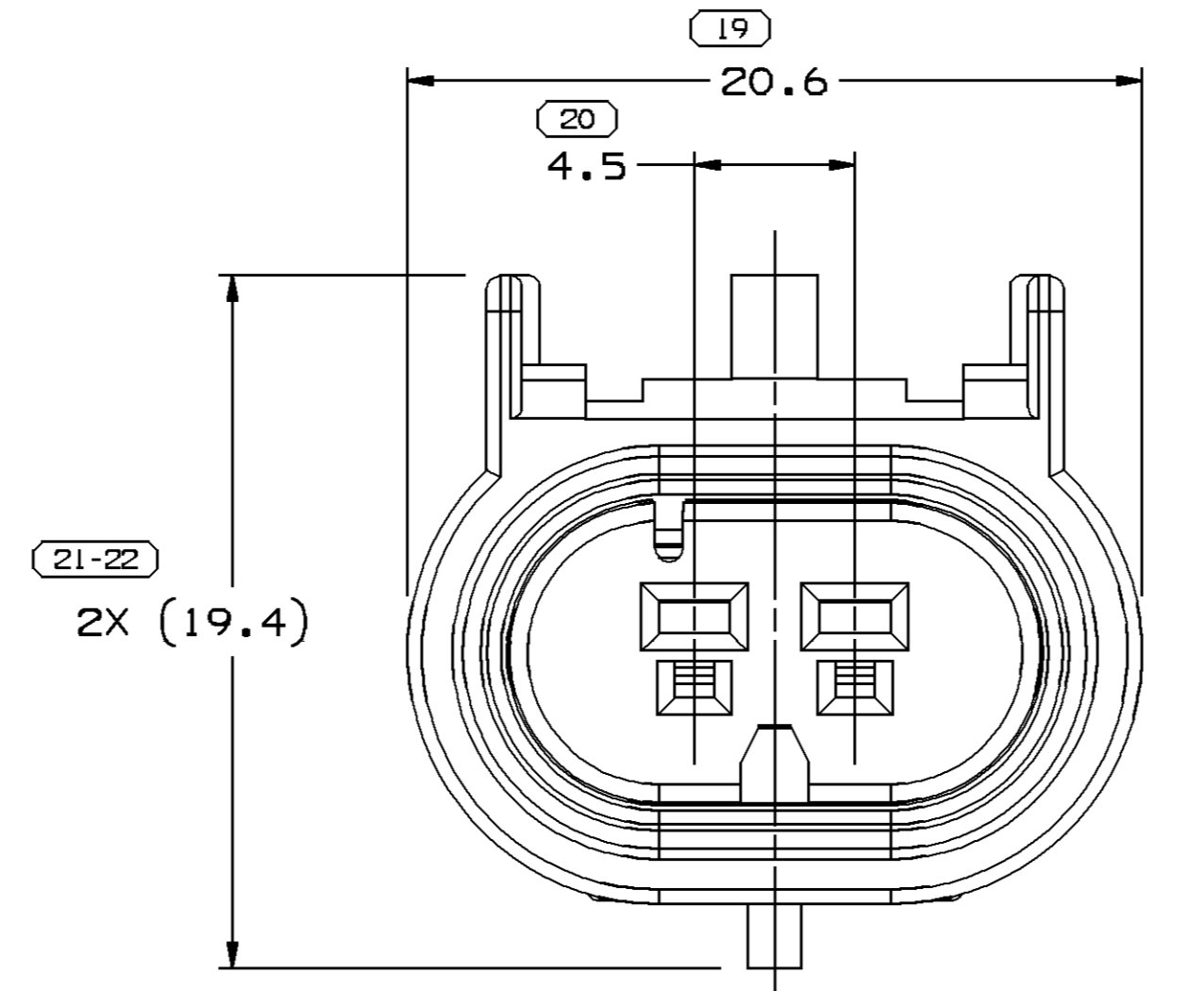
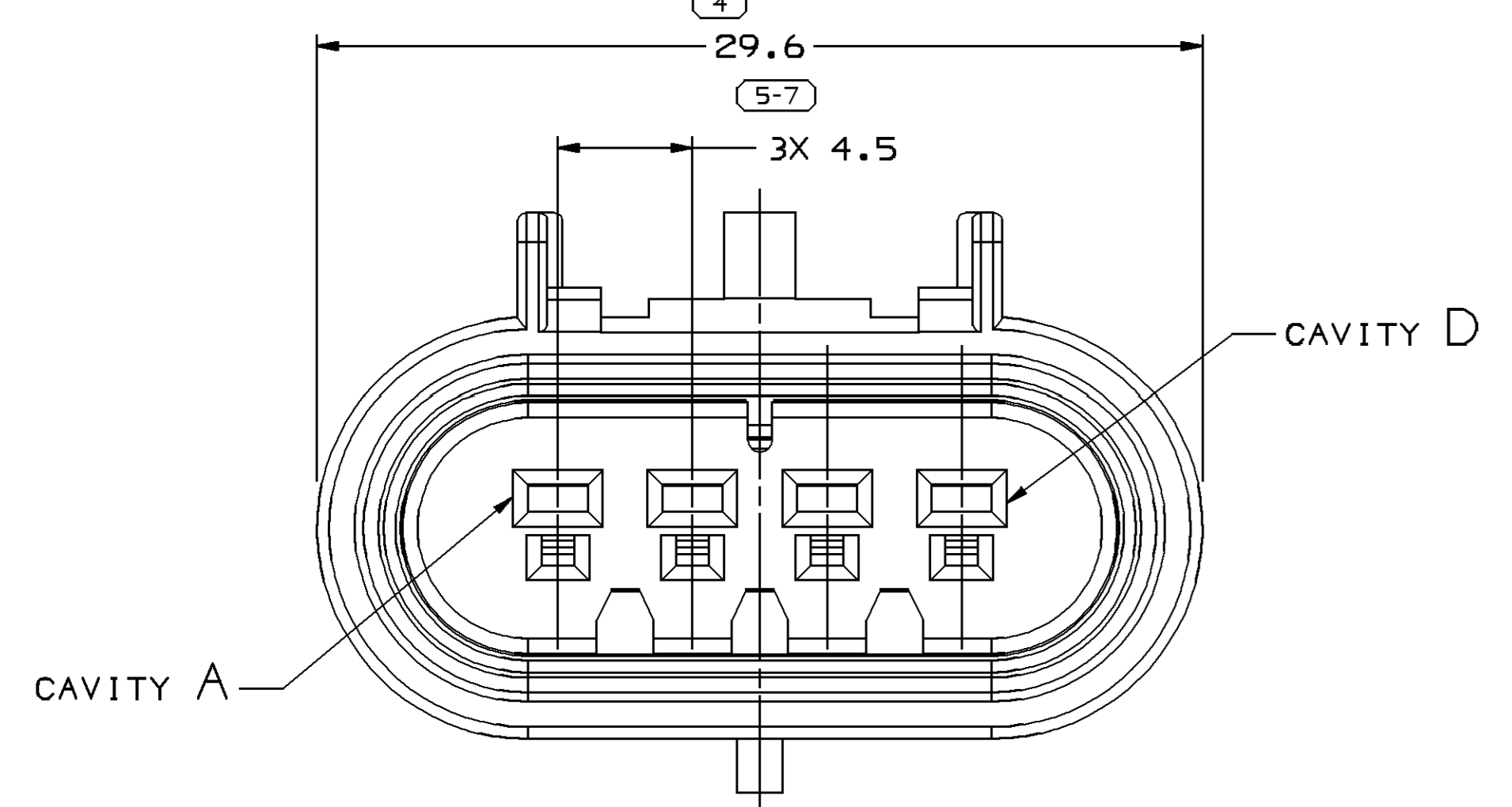
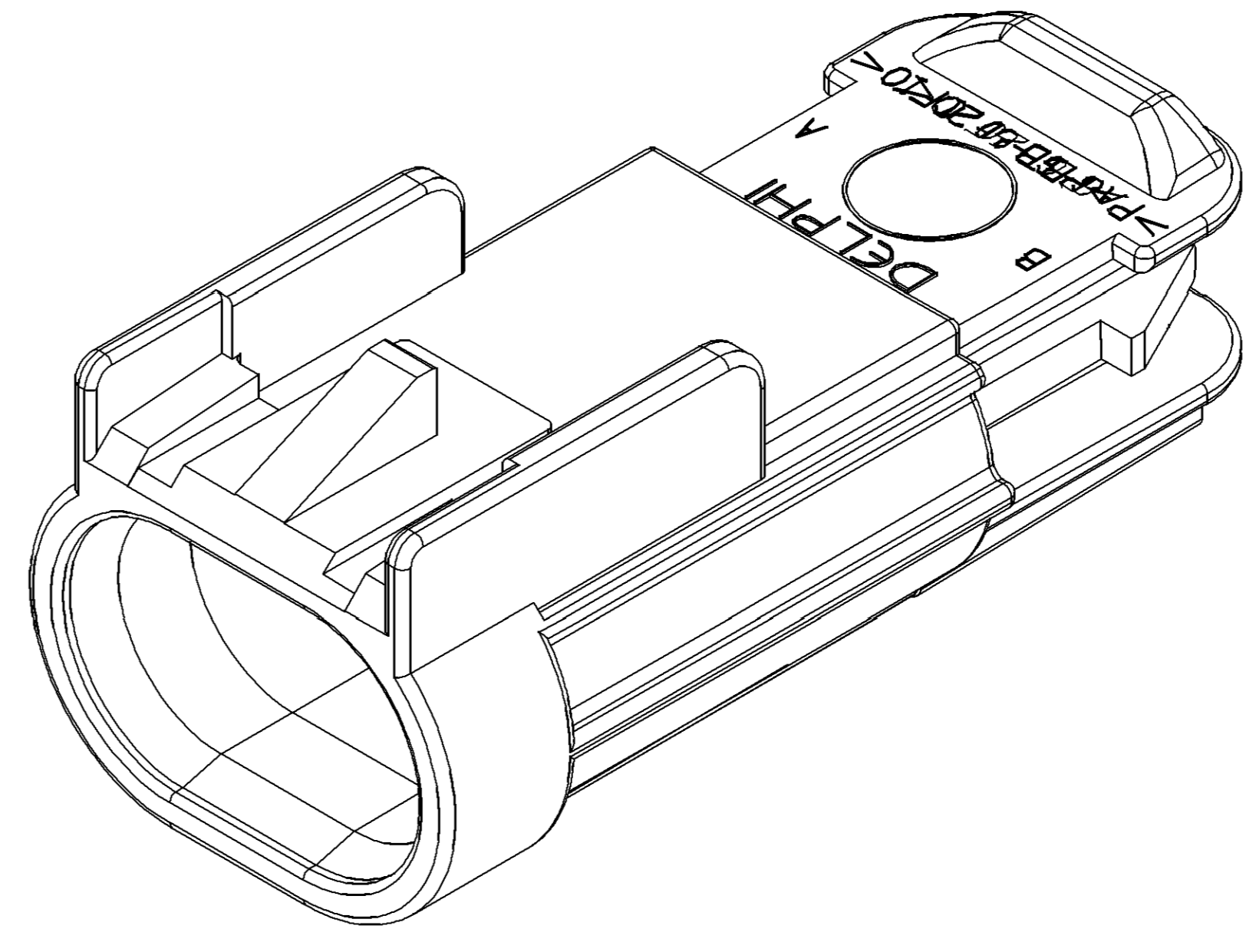
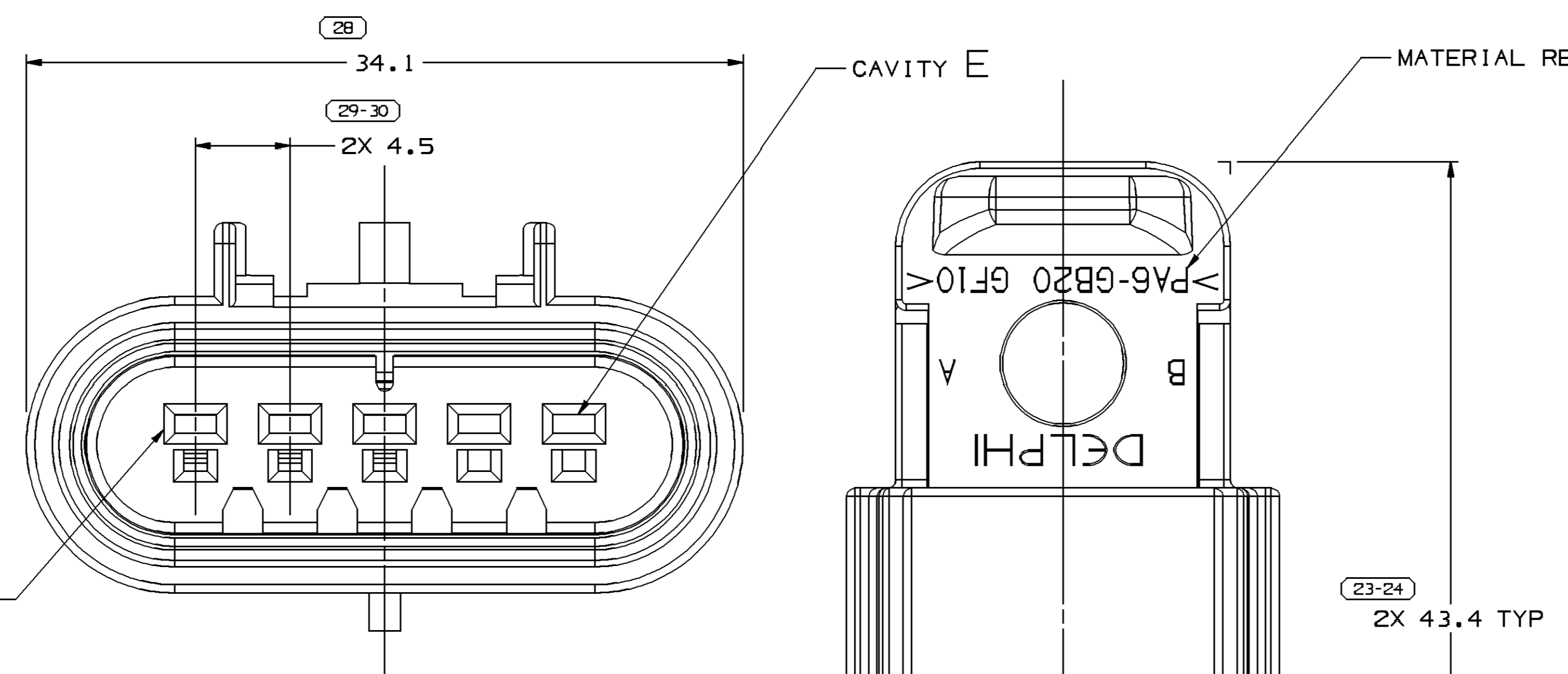
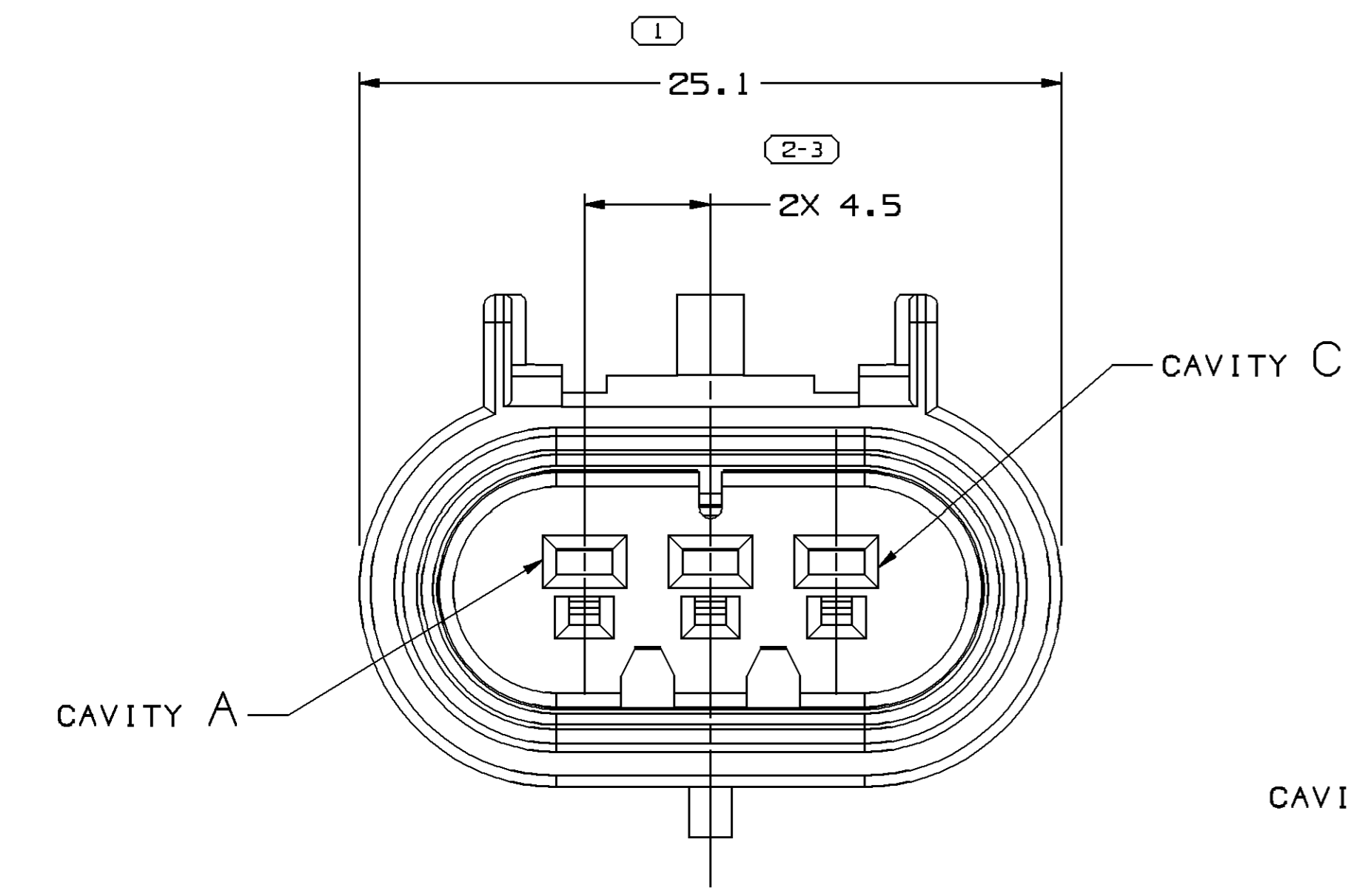
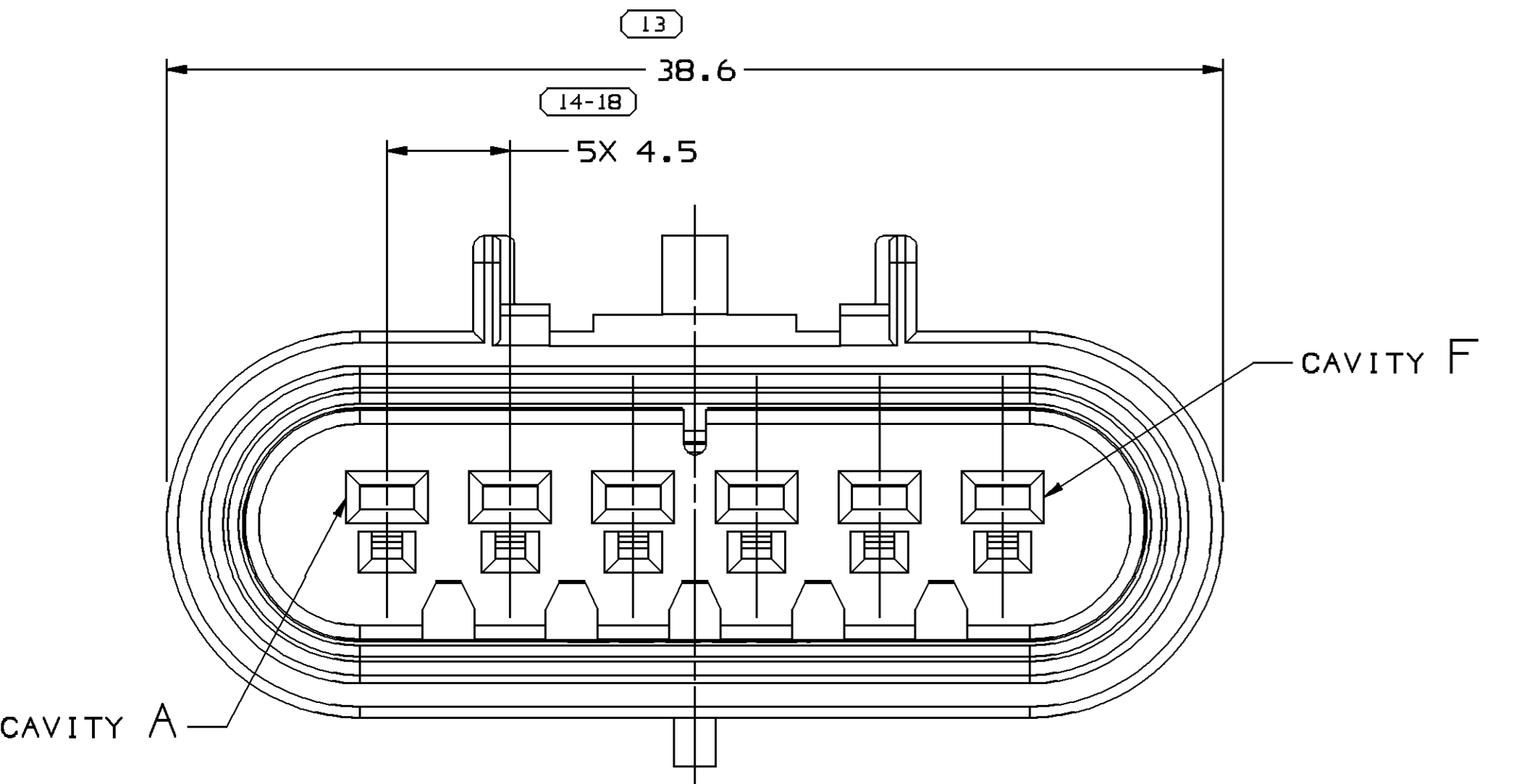


SYMBOL DEFINITION		MISSING NUMBERS	
A DIMENSION WITHOUT AN INSPECTION REPORT SYMBOL DOES NOT REQUIRE INSPECTION. IT MAY BE CONTROLLED ON AN INDIVIDUAL COMPONENT DRAWING.	TOTAL NO. OF SYMBOLS ON DRAWING	15	25-26,
	LAST NO. USED	30	

DATE	STG	REV	N/P	CHG	ZONE	REVISION HISTORY	AUTH	DR	AP/D	AP/D 2
04N099	R	001	-	-	-	CLARED REVISION COLUMN: ALL PARTS - REVISED GRAPHICS	197500	PHC	JCS	MC
03JA00	R	002	-	-	-	ALL PARTS REVISED, (19.4) WAS 19.4	198070	JHH	JHH	MC
27MR00	R	003	-	-	-	ALL PARTS - REVISED PLR	199420	KBD	KBD	MC
20AP00	R	004	-	-	-	ALL PARTS - ADDED (12.8) DIM & REMOVED 30.6 & 30.6 DIMS	199528	EVV	MVA	MC
29MR01	R	005	-	-	-	ALL PARTS - REVISED NOTES	206589	KBD	KBD	MC
29MR01	R	006	-	-	-	15397579 - RELEASED	207607	KBD	KBD	MC
22FE02	R	007	-	-	-	ALL PARTS - ADDED TPA MATING PART INFORMATION	220843	EVV	EVV	AH
13JA04	R	08	-	-	-	ADDED 15485648 AND REVISED NOTE 3	249215	BRB	BRB	LN
13JA04	R	08	-	-	-	ADDED 15487755	250452	BRB	BRB	LN
06MY04	R	09	-	-	-	CORRECTED ASSEMBLIES - 15326820, 15485648, 15487755.	254724	LLJ	LLJ	LN
10AU04	R	10	-	-	-	ALL PARTS - ADDED CAVITY PLUG NOTE: ADDED PART 13510099	257917	RH	RH	LN
01DE04	R	11	-	-	-	15326806 - UPDATED PDM ATTRIBUTES	261604	HAM	HAM	MC
04JA05	R	12	-	-	-	13519049, 13519053 - RELEASED	262679	ADK	ADK	LN
07FE05	R	13	-	-	-	13519592 - RELEASED	264260	JPB	JVM	PYP
29JN05	R	14	-	-	-	RELEASED 13533785	269268	JEB	JEB	LN
180C05	R	15	-	-	-	ALL PARTS - ADDED "CONN COLOR" COLUMN TO CHART: 15326806, 15326827 & 15326820 - CHANGED STATUS TO RESTRICTED AND ADDED "REPLACED BY" PART NUMBER: 13519592 - OBSOLETE: 13546698 - RELEASED	273303	CJP	CJP	LN
13FE06	R	16	-	-	-	UPDATED PDM ATTRIBUTES	277480	TS	TS	SM
17AP06	R	17	-	-	-	13510099 - UPDATED PDM ATTRIBUTES	279594	JBD	AUG	SRM
04AP07	R	18	-	-	-	15326806, 15326813, 15326820, 15326827 & 15326833 - UPDATED PDM ATTRIBUTES	401052	FFS	JVM	PYP
21AU07	R	19	-	-	-	13662835 - RELEASED	402163	ECB	AUG	KAF
04SE07	R	20	-	-	-	ALL PARTS - ADDED APPLICATION DATA NOTE AND REMOVED MATING COMP & ACCEPTED COMP INFORMATION - 13662836 WAS 15397576	402264	MM	MM	KAF
15N007	R	21	-	-	-	ALL PARTS - ADDED "PLR" COLUMN TO CHART	402964	GLG	AUG	KAF



- NOTES
- UNLESS OTHERWISE SPECIFIED AND/OR INDICATED:
DIMENSIONS ARE TO FACE OF VIEW SHOWN AND AUTOMATICALLY ROUNDED BY COMPUTER FOR INSPECTION (SEE MATH MODEL FOR PRECISE DIMENSIONS). FOR ALL OTHER DIMENSIONS NOT SHOWN BUT REQUIRED FOR TOOL BUILD, SEE MATH MODEL FOR PRECISE TOOL PATH DATA.
 - FOR APPLICATION DATA SEE THE INDIVIDUAL APPLICATION DRAWINGS.
 - THIS PRODUCT IS NOT CATEGORIZED AS AN APPEARANCE ITEM, MINOR IMPERFECTIONS INCLUDING, BUT NOT LIMITED TO, FLOW MARKS, COLOR BLEMISHES, GATE VESTIGES, AND SOFT FLASH THAT DO NOT AFFECT THE FIT, FORM, OR FUNCTION OF THE PART ARE PERMISSIBLE PER NAP 4.10-18.



PART NO	REV	N/P	STATUS	TYPE	CONNECTOR	CONN COLOR	MATERIAL RECYCLING CODE	PLR	REPLACED BY
13662835	01	AA	-	106	13662836	GRA	POLYESTER COMPOUND	15326937 / ID404318	-
13546698	01	AA	-	102	13546697	NAT	POLYESTER COMPOUND	15326803 / ID404323	-
13533785	01	AB	-	102	13534233	GRA	POLYESTER COMPOUND	15326803 / ID404323	-
13519592	01	AB	OBSOLETE	107	13519591	BLK	POLYAMIDE COMPOUND	15326824 / ID404319	-
13519053	01	AB	-	105	13519052	BLK	POLYESTER COMPOUND	15326824 / ID404319	-
13519049	01	AB	-	103	13519048	BLK	POLYESTER COMPOUND	15326810 / ID404322	-
13510099	01	AD	-	102	13510098	BLK	POLYESTER COMPOUND	15326803 / ID404323	-
15487755	01	AD	-	104	15487757	BLK	POLYESTER COMPOUND	15326817 / ID404321	-
15485648	01	AD	-	104	15485650	GRA	POLYESTER COMPOUND	15326817 / ID404321	-
15397579	01	AD	-	106	15397576	BLK	POLYESTER COMPOUND	15326937 / ID404318	-
15326833 / ID404618	03	AG	-	106	15326832 / ID404324	BLK	POLYAMIDE COMPOUND	15326937 / ID404318	-
15326827 / ID404617	03	AG	RESTRICTED	105	15326826 / ID404325	BLK	POLYAMIDE COMPOUND	15326824 / ID404319	13519053
15326820 / ID404616	03	AH	RESTRICTED	104	15326819 / ID404326	BLK	POLYAMIDE COMPOUND	15326817 / ID404321	15487755
15326813 / ID404615	03	AG	-	103	15326812 / ID404327	BLK	POLYAMIDE COMPOUND	15326810 / ID404322	-
15326806 / ID404614	03	AH	RESTRICTED	102	15326805 / ID404328	BLK	POLYAMIDE COMPOUND	15326803 / ID404323	-

DELPHI
DELPHI PACKARD ELECTRICAL/ELECTRONIC ARCHITECTURE
NAPER, IL

DATE: 16 JUL 97
DATE: 25 JUL 97

DR: M. MCCALL
APV02: M. MCCALL
APV03: M. CHUPAK
APV04:

SUBSTANCES OF CONCERN AND RECYCLED CONTENT PER DELPHI 1044001

DRAWING NAME: TAXI ASM CONN M 6T 150 SLD
DRAWING NUMBER: 15326962

SCALE: 5:1
SHEET NO: 1 OF 2
REV: 1
N/P: 21

Part: 15326962-01001-1301 Date: 11-Jun-98 Time: 17:34