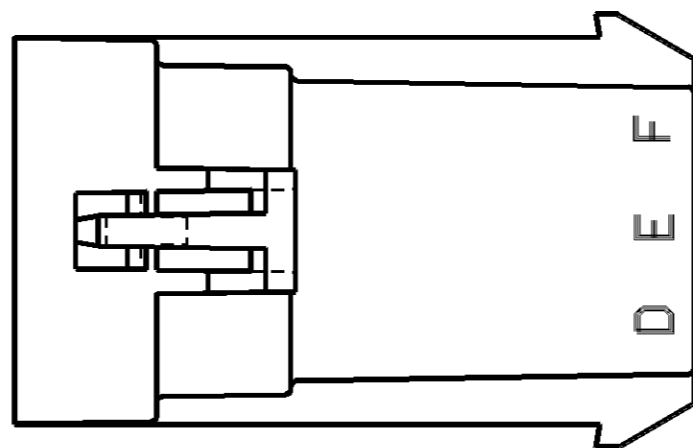
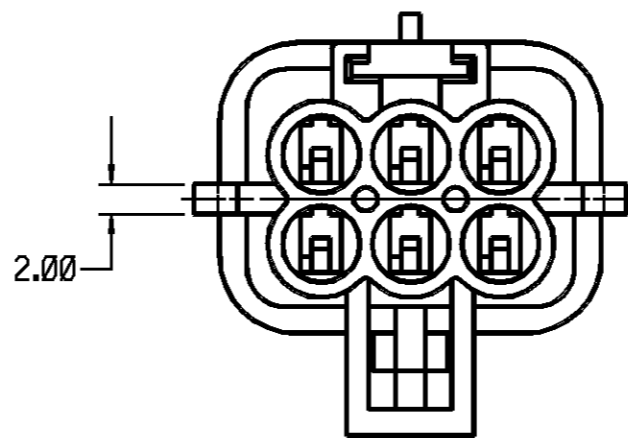
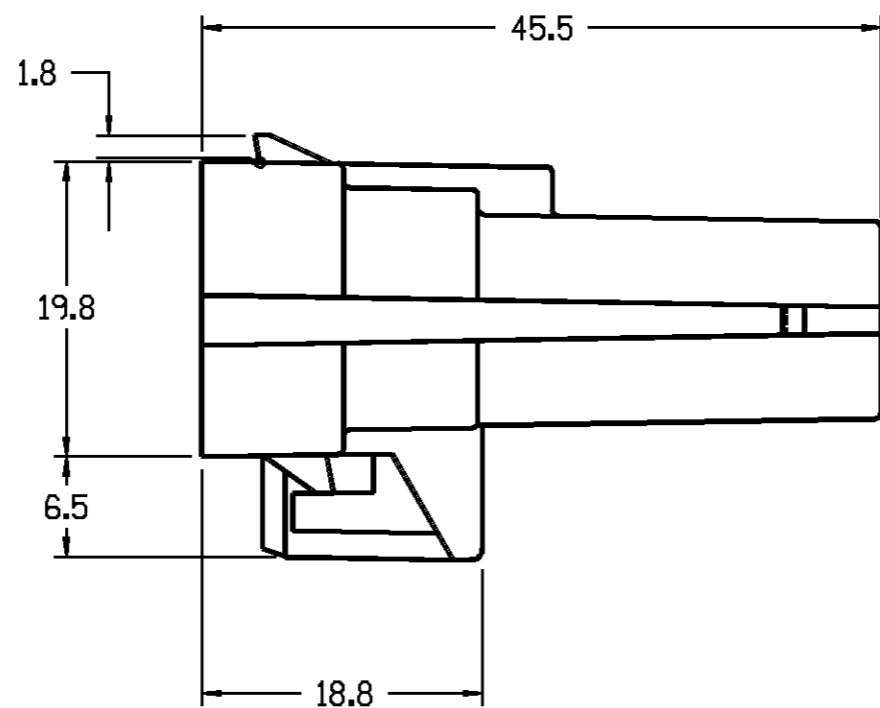
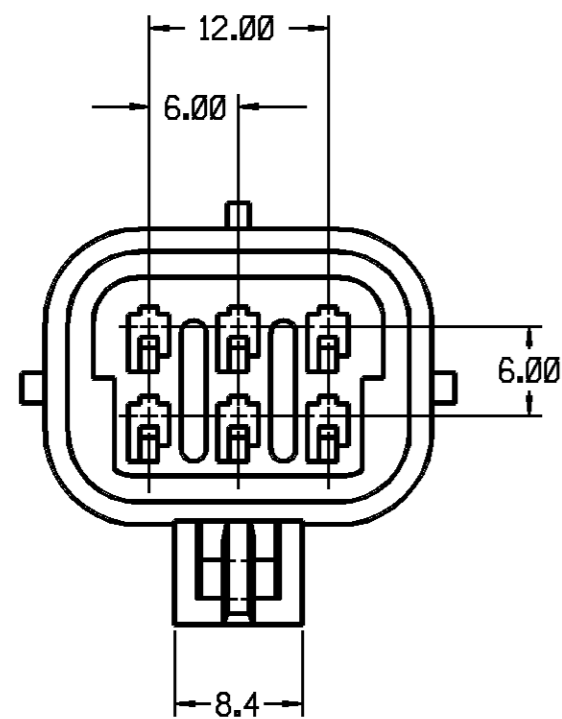
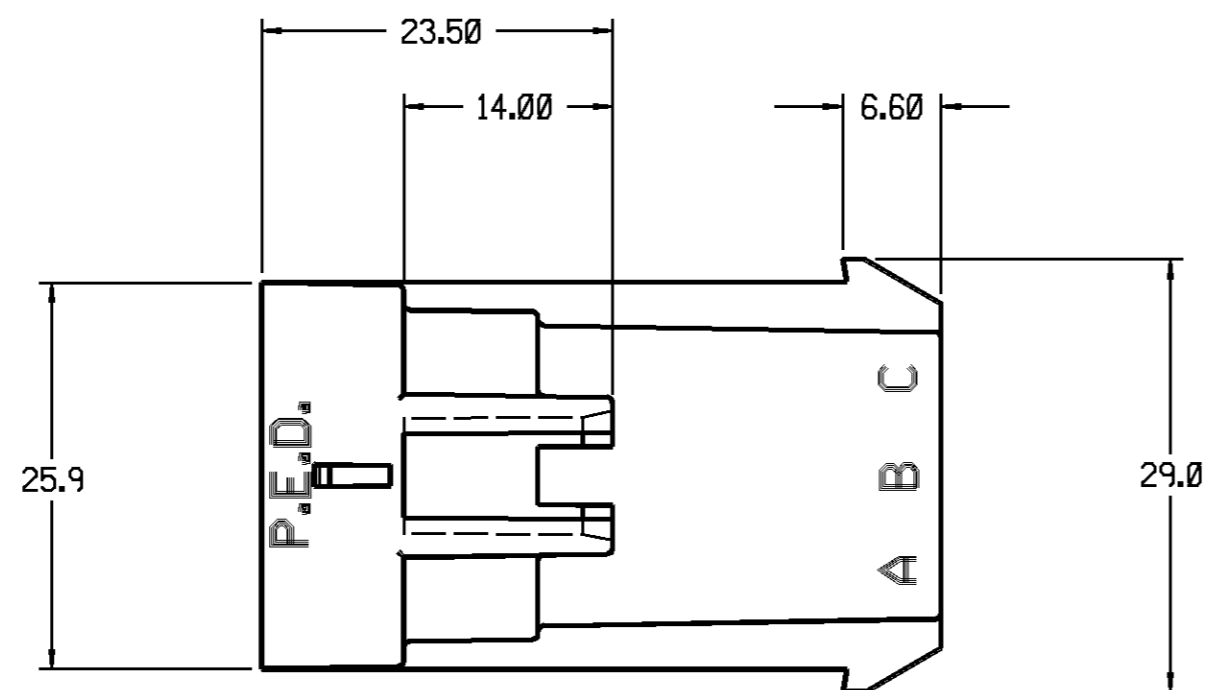


D

THIS DRAWING AND DESIGN HEREON CONSTITUTES A PROPRIETARY DESIGN OF PACKARD ELECTRIC DIVISION AND IS NOT TO BE DUPLICATED OR REPRODUCED WITHOUT AUTHORITY OF PACKARD ELECTRIC DIVISION.

DO NOT SCALE



1. CAVITIES TO ACCEPT 12048086 CABLE SEAL OR EQUIVALENT.
2. CAVITIES TO ACCEPT 12045773 TERMINAL OR EQUIVALENT.
3. THIS CONNECTOR TO MATE WITH 12052848 CONNECTOR AND SEAL ASSEMBLY.
4. THIS CONNECTOR TO ACCEPT 12052850 SECONDARY LOCK OR EQUIVALENT.
5. MAXIMUM CABLE DIAMETER FOR THIS PART IS 2.80 MM.
6. THIS CONNECTOR TO ACCEPT 12020833 T-LOCK (CPA) WHEN MATED TO 12052848 CONNECTOR & SEAL ASM. OR EQUIVALENT.
7. SEALING CODE 3.

DATE	SYM	REVISION RECORD	AUTHORITY	DR	CK
30MY91	A	RELEASED	910005	BAR	BAR

PART NO. 1212 4107

PACKARD ELECTRIC DIVISION  
GENERAL MOTORS CORPORATION  
WARREN, OHIO

PED / MICROSTATION MICROSTATION		FILE SPEC: ****USER**** DGN SPECIFICATION***** *****SYTIME*****
THIRD ANGLE PROJECTION 		<b>METRIC</b> DIMENSIONS ARE IN MILLIMETERS UNLESS OTHERWISE SPECIFIED.
CODE NO. 6900	TOLERANCE UNLESS OTHERWISE SPECIFIED DECIMAL: ONE PLACE ±0.3 ANGULAR ±2° TWO PLACE ±0.15	
DWG. DATE 30MY91	SCALE NONE	DR. BARBARA RUBERTO 30MY91
EST. NO.	CK.	DATE
REFERENCE NO. 12124107 'E' SIZE	APPR.	DATE
MATERIAL SPEC. NYLON TYPE 6,6 - BLACK		
NAME CONN 6M M/P 150		
PART NO. 1212 4107 OUTLINE DRAWING	SIZE C	