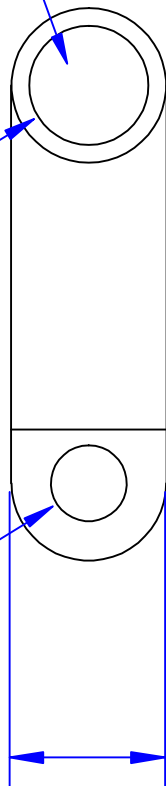


**I.D. sized for  
2/0 ga [62mm<sup>2</sup>]  
stranded cable**

**Prefilled With  
Rosin & Solder**

**Hole sized for  
5/16" [M8] bolt**



**4<sup>1</sup>/<sub>64</sub>"  
[16.3mm]  
Ref**

**2-<sup>1</sup>/<sub>2</sub>"  
[63.5mm]  
Ref**



**2-<sup>5</sup>/<sub>64</sub>"  
[52.8mm]  
Ref**

**Sized For  
Neg. Post**

**Cable Size  
Stamp**

**Polarity  
Stamp**

**To Include:  
5/16-18 Bolt  
P/N 6700T  
5/16-18 Nut  
P/N 6701T**

<b>Property of</b> <b>QUICK CABLE</b> 3700 Quick Drive Frankeville, WI 53126 U.S.A. www.quickcable.com	<b>TITLE</b> <b>Die Cast 2/0 Ga.          Flag [62mm<sup>2</sup>]</b>
	<b>PART #</b> <b>436320N</b>
<b>Confidential and Proprietary Information</b>	
<b>Material &amp; Treatment</b> <b>High Conductivity          Copper Alloy          Matte Tin Plate</b>	<b>Drawing #</b> <b>436320N-Info</b>
<b>Sheet 1 of 1</b>	

Rev	Date	ECN#	By	Description

<b>Drawn By</b> Jim H	<b>Date</b> 8-08-07	<b>Checked By</b> Mike E	<b>Scale</b> None
<b>Tolerances, unless otherwise noted</b> <b>Dimensions are reference only</b>			