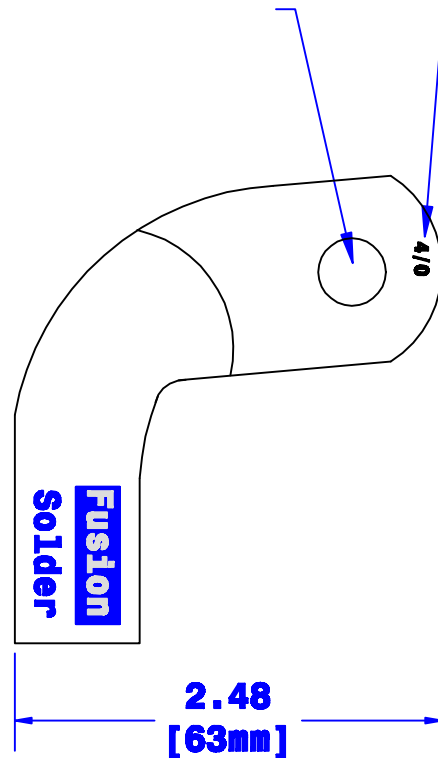
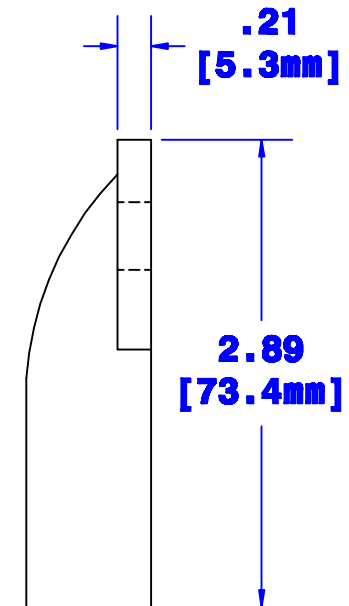


Sized for 3/8" [M10] Stud



Stamped Gauge Size



**Prefilled With Rosin & Solder
Sized for 4/0 Ga. [103mm²] Cable
Chamfered Lead-in**

<div>Property of</div> <div>QUICK CABLE</div> <div>3700 Quick Drive</div> <div>Franksville, WI 53126</div> <div>U.S.A.</div> <div>www.quickcable.com</div>	<div>TITLE</div> <div>Magna Lug, Fusion</div> <div>Right Elbow, 4/0</div>	
	<div>PART #</div> <div>141210</div>	
<div>Confidential and Proprietary Information</div>		
<div>Material & Treatment</div> <div>Copper Tube</div> <div>Tin Plated</div>	<div>Drawing #</div> <div>141210-Info</div>	REV
	<div>Sheet 1</div>	<div>of 1</div>

					Drawn By Jim H	Date 10-13-06	Checked By Mike E	Scale None
					Tolerances, unless otherwise noted Dimensions are reference only			
Rev	Date	ECN#	By	Description				